

Quick Card

FiberChek Sidewinder™ Fiber Microscope LC Fiber Inspection with the FCPT-LC tip

This quick card describes how to use the FiberChek Sidewinder Fiber Inspection Probe Microscope to inspect a Ribbon MPO fiber end face.

Equipment Requirements:

- FiberChek Sidewinder Probe Fiber Inspection Microscope
- FCPT-LC Inspection Tip
- LC Coupler/Mating Adapter
- Fiber optic cleaning tools

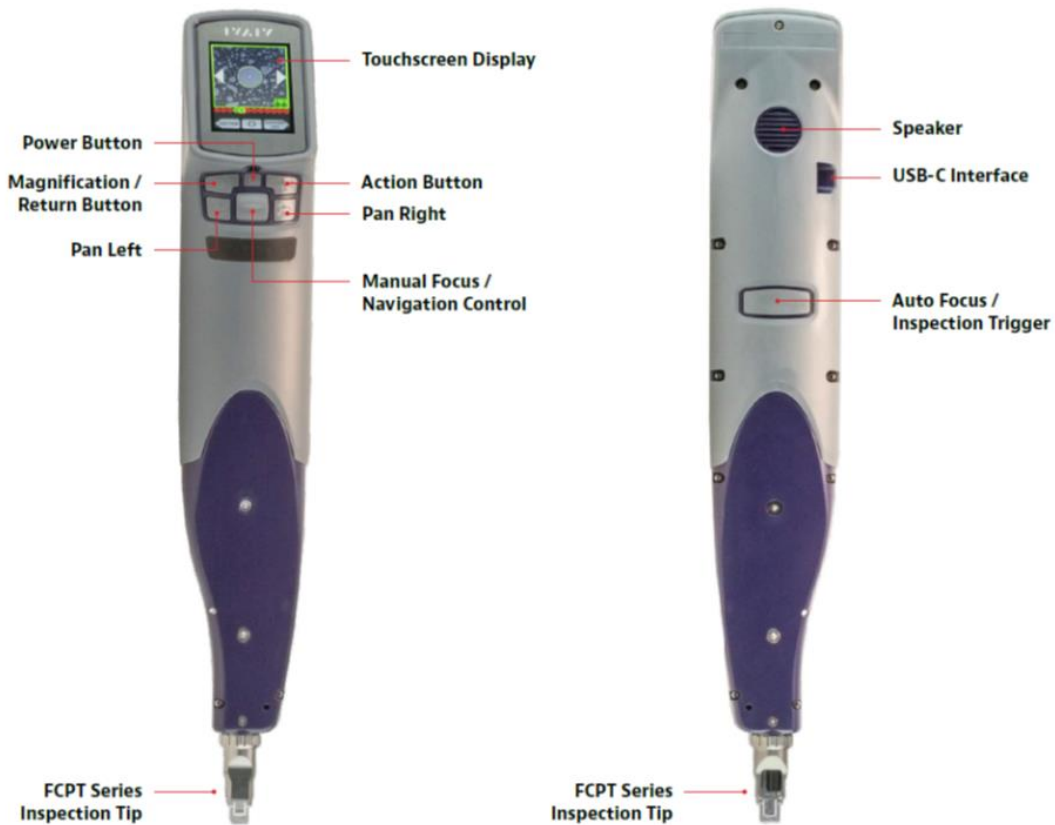


Figure 1: FiberChek Sidewinder Fiber Inspection Probe Microscope



Figure 2: MPO Tip, Multimode
(VIAVI Part# FCPT-LC)



Figure 3: LC Coupler

Set up the FiberChek Sidewinder Microscope for PASS/FAIL analysis:




1. Press the Power Button  to turn on the FiberChek Sidewinder.
2. From the **Live Inspection View**, tap the Touchscreen Display to enter the Settings Menu.
3. Select **CONNECTOR SETUP** using the **Navigation Control** .
4. Press the **Action Button** .
5. Choose the desired inspection profile using the **Navigation Control**.
 - Select SM UPC (IEC-61300-3) for single mode UPC connectors.
 - Select MM (IEC-61300-3-35 for Multimode UPC connectors.
6. Press the **Action Button**.
7. If you are prompted to “**Finish connector setup, power down device, change the tip, and then power device up**”, tap **OK** to continue.
8. Press the **Action Button** to select **Simplex**.



Figure 4: Settings Menu

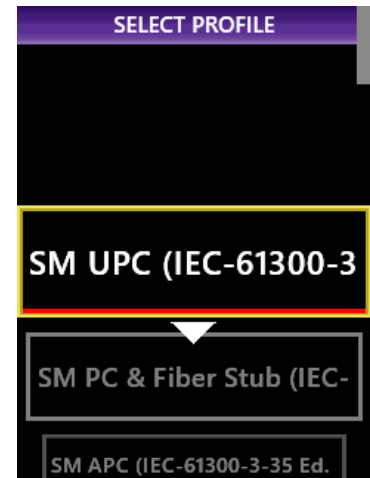


Figure 5: Select Profile



Figure 6: Fiber Type Changed

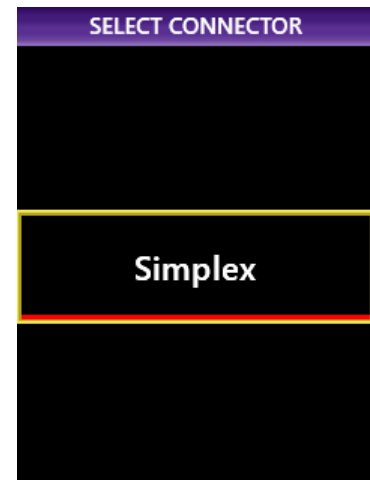


Figure 7: Select Connector

9. Choose the **FCPT-LC** optical setting using the **Navigation Control** and press the **Action Button**.
10. Return to the **Live Inspection view** by pressing the **Autofocus/Inspection Trigger**.

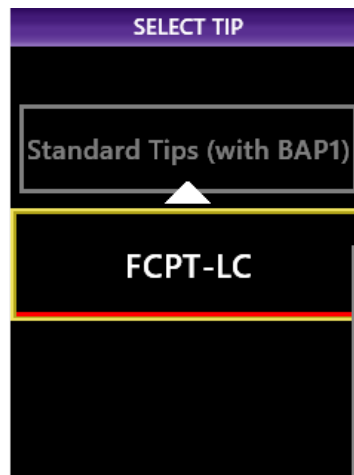




Figure 8: Select Tip



Figure 9: Live Inspection view

Swap Tips:

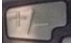
If a different tip is currently installed on the Sidewinder:

- Press the Power Button  to turn off the unit.
- Swap the tip by loosening the retaining nut at the base of the tip.
- Press the Power Button  to turn on the unit.

Inspect Fiber end-face:

- To inspect a bulkhead connector, insert the **FCPT-LC Inspection Tip** into the bulkhead.
- To inspect a patch cable, insert the patch cable into the **LC Mating Adapter/Coupler** and insert the **FCPT-LC Inspection Tip** into the other side of the **LC Mating Adapter/Coupler**.

Run Pass/Fail Analysis:

1. Ensure the Sidewinder is in the **Live Inspection** view.
2. Press the **Magnification** button  to increase the magnification level.
3. Press and hold the **Autofocus/Inspection Trigger** for two seconds and release. Hold the Sidewinder steady in the bulkhead or coupler until you hear or see the **PASS/FAIL** result.
 - The above process will automatically focus and test all fibers in the array.
 - To manually focus and test, use the **Manual Focus/Navigation Control** to adjust focus and press the **Action Button** to run the test.

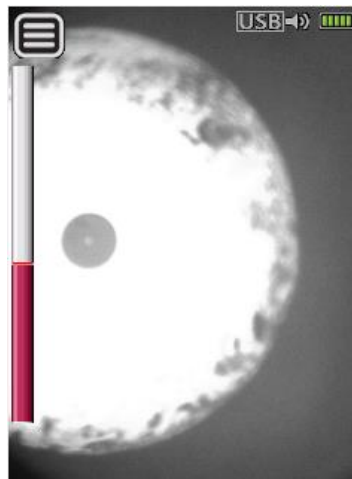


Figure 10: Live Image

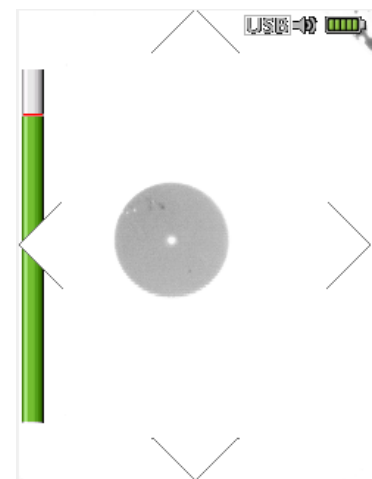


Figure 11: Live Image, Magnified, with Correct Focus for Testing

Review results:

1. Sidewinder will briefly display the analysis result, then enter the **Analysis Result** view. If enabled, you will also hear an audio tone indicating whether the result is a **PASS** (double chime) or a **FAIL** (long buzzer).
 - A green screen with a “check” graphic indicates a **PASS** result.
 - A red screen with an “X” graphic indicates a **FAIL** result.



Figure 12: Pass



Figure 13: Fail

2. The above Pass/Fail result indicates the result for the entire connector. If one or more fibers fail, the entire connector is recorded as a **FAIL**. To achieve a **PASS** result, all fibers must individually pass. The subsequent view shows results for individual fibers.

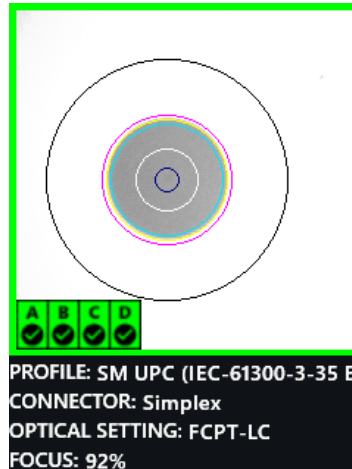


Figure 14: Passing Test

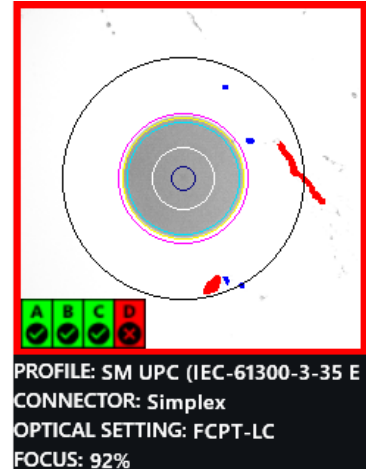


Figure 15: Failing Test

3. Tap the Touchscreen Display to show or hide additional information. The modes are **Rings + Table** (pictured above), **No Overlay**, and **Rings/No Table**.

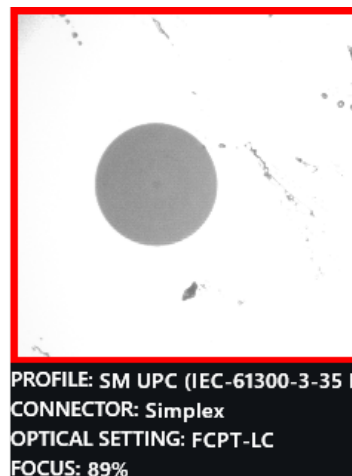


Figure 16: No Rings, No Table

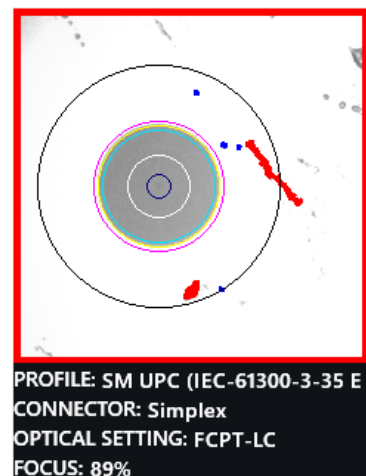


Figure 17: Rings, No Table

4. Press the **Action Button** to save the current analysis to Sidewinder's internal storage.

5. Press the **Autofocus/Inspection Trigger** to return to the Live Inspection view. To test a new MPO connector, go back to step 1 under **Run Pass-Fail Analysis** and restart the process following all the steps above.



Figure 18: Saving Results

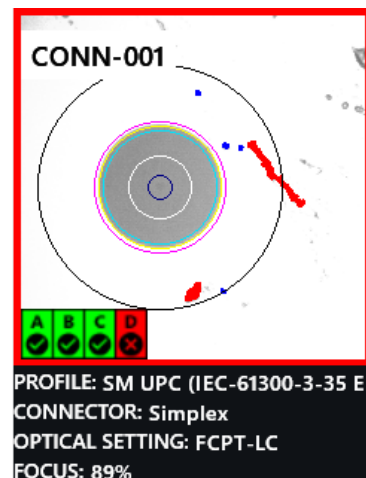


Figure 19: Saved Results